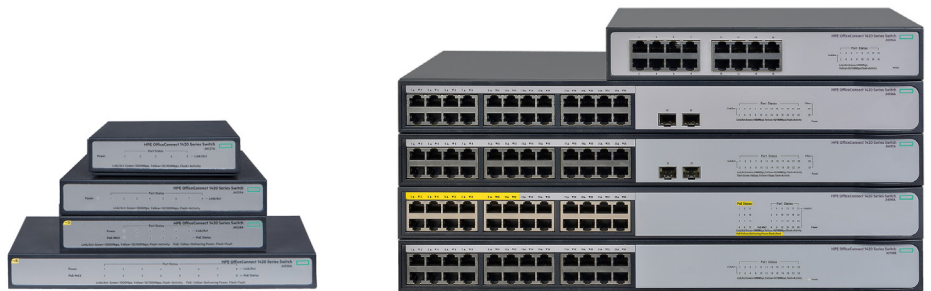




HPE OfficeConnect 1420 Switch Series



Key features

- Unmanaged plug-and-play Gigabit Ethernet switching
- Green features for low power consumption
- Fanless design for silent operation
- Quality of Service capabilities for improved network efficiency
- Limited Lifetime Warranty

Product overview

The HPE OfficeConnect 1420 Switch Series consists of unmanaged Gigabit Ethernet switches, for small businesses and others looking for plug-and-play basic Layer 2 connectivity for their network, including low-cost PoE+ and 10-Gigabit uplink models.

The 1420 Switch Series includes nine Gigabit switches. All have 10/100/1000 ports for affordable Gigabit connections using copper Category 5 cabling. There is a model with 16 RJ-45 ports. There is a 24-port model with two SFP Gigabit ports, ideal where long distances require fiber-based connections. Another 24-port model supports IEEE 802.3at PoE+ on 12 of its ports, able to forward up to 30 W power on these ports to power access points, IP phones, IP cameras, and other PoE-enabled devices. For cost-effective high-speed fiber-based server connections, there is a 24-port 10/100/1000 switch with two SFP+ 10-Gigabit ports. Lastly, there is a model simply with a 24-port 10/100/1000 layout.

HPE OfficeConnect 1420 switches have Quality of Service (QoS) support and IEEE 802.3x flow control features that improve network efficiency.

Simplified plug-and-play convenience is supported by features such as auto-MDIX and auto-speed negotiation. Hewlett Packard Enterprise has innovated and combined the latest advances in silicon technology to bring you some of the most power-efficient switches. All models support the Energy Efficient Ethernet IEEE 802.3az standard, as well as auto power-down mode on idle ports and power saving on short-distance cables. With their fanless silent operation, these switches are ideal for office deployment. HPE OfficeConnect 1420 switches come with a Limited Lifetime Warranty covering the unit and power supplies.

Features and benefits

Ease of use

- Unmanaged

Provides plug-and-play simplicity

- Auto-speed negotiation

Selects individual port speed automatically, depending on client capabilities; removing the need for manual intervention enables simple plug-and-play operation

- Comprehensive LED display with per-port indicators

Provides an at-a-glance view of the status, activity, speed, and full-duplex operation of the switches

- Flow control

Helps ensure reliable communications during full-duplex operation

- HPE/IEEE Auto-MDIX

Automatically adjusts for straight-through or crossover cables on all RJ-45 ports

Connectivity

- Gigabit Ethernet 10/100/1000 connectivity—high speed Ethernet connections over highly affordable copper Category 5 cabling

- 10-Gigabit fiber connectivity

Future-proof 10-Gigabit technology allows high-speed fiber connection to servers or other switches with connection flexibility using optional SFP+ transceivers (Model: JH018A)

- IEEE 802.3at Power over Ethernet (PoE+)

Provides up to 30 W per port, which allows support of the latest PoE+ capable devices such as IP phones, wireless Access Points, and security cameras, as well as any IEEE 802.3af compliant end device; reduces the cost of additional electrical cabling and circuits that would otherwise be necessary in IP phone and WLAN deployments (Models: JH019A, JH328A, JH330A)

Performance

- Energy Efficient Ethernet support

Supports new IEEE 802.3az standard; and allows lower power consumption, when operated with IEEE-compliant client devices

- Half-/full-duplex auto-negotiating capability on every port doubles the throughput of every port

- Jumbo frame support

Allows frames up to 9,216 bytes to be switched through the network

Flexibility

- Fanless design

Enables quiet operation for deployment in open spaces

- Internal power supply

Delivers operational convenience and an environment suitable for business operations

Quality of Service (QoS)

- IEEE 802.1p prioritization

Delivers data to devices, based on the priority and type of traffic

- DiffServ Code Point (DSCP) support

Allows real-time traffic prioritization, based on Layer 3 TOS/DSCP parameters

Warranty and support

- Limited Lifetime Warranty

This series comes with a Limited Lifetime Warranty providing advance hardware replacement with next business day shipment in most countries, 24x7 phone support available for the first 90 days, and electronic and business hours phone support for the entire warranty period. See hpe.com/networking/warrantysummary for full warranty and support information included with your product purchase.

HPE OfficeConnect 1420 Switch Series



Specifications

HPE OfficeConnect 1420-16G Switch (JH016A)

HPE OfficeConnect 1420-24G-2SFP Switch (JH017A)

I/O ports and slots

16 RJ-45 autosensing 10/100/1000 ports (IEEE 802.3 Type 10BASE-T, IEEE 802.3u Type 100BASE-TX, IEEE 802.3ab Type 1000BASE-T); Media Type: Auto-MDIX; Duplex: 10BASE-T/100BASE-TX: half or full; 1000BASE-T: full only

Supports a maximum of 16 autosensing 10/100/1000 ports

24 RJ-45 autosensing 10/100/1000 ports (IEEE 802.3 Type 10BASE-T, IEEE 802.3u Type 100BASE-TX, IEEE 802.3ab Type 1000BASE-T); Media Type: Auto-MDIX; Duplex: 10BASE-T/100BASE-TX: half or full; 1000BASE-T: full only

2 SFP 100/1000 Mbps ports (IEEE 802.3z Type 1000BASE-X, IEEE 802.3u Type 100BASE-FX)

Supports a maximum of 24 autosensing 10/100/1000 ports plus 2 SFP ports

Physical characteristics

Dimensions 10.47(w) x 6.38(d) x 1.73(h) in. (26.6 x 16.2 x 4.4 cm) 17.32(w) x 6.81(d) x 1.73(h) in. (44 x 17.3 x 4.4 cm)

Weight 2.65 lb (1.2 kg) 4.85 lb (2.2 kg)

Memory and processor

1 MB flash; Packet buffer size: 512 KB 1 MB flash; Packet buffer size: 512 KB

Mounting and enclosure

Mounts in an EIA standard 19-inch telco rack (hardware included); Desktop mounting Mounts in an EIA standard 19-inch telco rack (hardware included); Desktop mounting

Performance

100 Mb Latency < 8 μs (LIFO 64-byte packets) < 8 μs (LIFO 64-byte packets)

1000 Mb Latency < 16 μs (LIFO 64-byte packets) < 16 μs (LIFO 64-byte packets)

Throughput Up to 23.8 Mpps (64-byte packets) Up to 38.7 Mpps (64-byte packets)

Switching capacity 32 Gbps 52 Gbps

MAC address table size 8192 entries 8192 entries

Environment

Operating temperature 32°F to 104°F (0°C to 40°C) 32°F to 104°F (0°C to 40°C)

Operating relative humidity 5% to 95%, noncondensing 5% to 95%, noncondensing

Nonoperating/Storage temperature -40°F to 158°F (-40°C to 70°C) -40°F to 158°F (-40°C to 70°C)

Nonoperating/Storage relative humidity 5% to 95%, noncondensing 5% to 95%, noncondensing

Altitude Up to 16,404 ft (5 km) Up to 16,404 ft (5 km)

Acoustic Power: 0 dB No fan Power: 0 dB No fan

Reliability

MTBF (years) 153.35 years 131.08 years

HPE OfficeConnect 1420 Switch Series (continued)

Specifications (continued)	HPE OfficeConnect 1420-16G Switch (JH016A)	HPE OfficeConnect 1420-24G-2SFP Switch (JH017A)
Electrical characteristics		
Frequency	50/60 Hz	50/60 Hz
Voltage	100–240 VAC, rated	100–240 VAC, rated
Current	0.2 A	0.3 A
Maximum power rating	12 W	18 W
Notes	Maximum power rating is the worst-case theoretical maximum number provided for planning the infrastructure with fully loaded PoE (if equipped), 100% traffic, all ports plugged in, and all modules populated. This model comes with an internal power supply. Power cord provided based on region option.	Maximum power rating is the worst-case theoretical maximum number provided for planning the infrastructure with fully loaded PoE (if equipped), 100% traffic, all ports plugged in, and all modules populated. This model comes with an internal power supply. Power cord provided based on region option.
Safety	CSA 22.2 No. 60950; UL 60950-1; IEC 60950-1; EN 60950-1	CSA 22.2 No. 60950; UL 60950-1; IEC 60950-1; EN 60950-1
Emissions	FCC Rules Part 15, Subpart B Class A	FCC Rules Part 15, Subpart B Class A
Immunity		
Generic	EN 55022, CISPR 22	EN 55022, CISPR 22
EN	EN 55024, CISPR 24	EN 55024, CISPR 24
ESD	IEC 61000-4-2	IEC 61000-4-2
Radiated	IEC 61000-4-3	IEC 61000-4-3
EFT/Burst	IEC 61000-4-4	IEC 61000-4-4
Surge	IEC 61000-4-5	IEC 61000-4-5
Conducted	IEC 61000-4-6	IEC 61000-4-6
Power frequency magnetic field	IEC 61000-4-8	IEC 61000-4-8
Voltage dips and interruptions	IEC 61000-4-11	IEC 61000-4-11
Harmonics	IEC 61000-3-2	IEC 61000-3-2
Flicker	IEC 61000-3-3	IEC 61000-3-3
Notes		Use only supported genuine HPE transceivers with your switch.
Services	Refer to the Hewlett Packard Enterprise website at hpe.com/networking/services for details on the service-level descriptions and product numbers. For details about services, and response times in your area, please contact your local Hewlett Packard Enterprise sales office.	Refer to the Hewlett Packard Enterprise website at hpe.com/networking/services for details on the service-level descriptions and product numbers. For details about services, and response times in your area, please contact your local Hewlett Packard Enterprise sales office.

HPE OfficeConnect 1420 Switch Series (continued)



HPE OfficeConnect 1420-24G-2SFP+ 10G Uplink Switch (JH018A)



HPE OfficeConnect 1420-24G-PoE+ (124W) Switch (JH019A)

Specifications (continued)

I/O ports and slots

24 RJ-45 autosensing 10/100/1000 ports (IEEE 802.3 Type 10BASE-T, IEEE 802.3u Type 100BASE-TX, IEEE 802.3ab Type 1000BASE-T); Media Type: Auto-MDIX; Duplex: 10BASE-T/100BASE-TX: half or full; 1000BASE-T: full only

2 SFP+ 1000/10000 Mbps ports (IEEE 802.3z Type 1000BASE-X, IEEE 802.3ae 10GBASE-X)

Supports a maximum of 24 autosensing 10/100/1000 ports plus 2 SFP+ ports

24 RJ-45 autosensing 10/100/1000 ports (IEEE 802.3 Type 10BASE-T, IEEE 802.3u Type 100BASE-TX, IEEE 802.3ab Type 1000BASE-T); Media Type: Auto-MDIX; Duplex: 10BASE-T/100BASE-TX: half or full; 1000BASE-T: full only

Supports a maximum of 24 autosensing 10/100/1000 ports

Physical characteristics

Dimensions 17.32(w) x 9.37(d) x 1.73(h) in. (44 x 23.8 x 4.4 cm) 17.32(w) x 9.37(d) x 1.73(h) in. (44 x 23.8 x 4.4 cm)

Weight 6.39 lb (2.9 kg) 7.28 lb (3.3 kg)

Memory and processor

8 MB flash; Packet buffer size: 1.5 MB 1 MB flash; Packet buffer size: 512 KB

Mounting and enclosure

Mounts in an EIA standard 19-inch telco rack (hardware included); Desktop mounting Mounts in an EIA standard 19-inch telco rack (hardware included); Desktop mounting

Performance

100 Mb Latency < 8 μ s (LIFO 64-byte packets) < 8 μ s (LIFO 64-byte packets)

1000 Mb Latency < 16 μ s (LIFO 64-byte packets) < 16 μ s (LIFO 64-byte packets)

10 Gbps Latency < 2 μ s (LIFO 64-byte packets) < 2 μ s (LIFO 64-byte packets)

Throughput Up to 65.5 Mpps (64-byte packets) Up to 35.7 Mpps (64-byte packets)

Switching capacity 88 Gbps 48 Gbps

MAC address table size 16384 entries 8192 entries

Environment

Operating temperature 32°F to 104°F (0°C to 40°C) 32°F to 104°F (0°C to 40°C)

Operating relative humidity 5% to 95%, noncondensing 5% to 95%, noncondensing

Nonoperating/Storage temperature -40°F to 158°F (-40°C to 70°C) -40°F to 158°F (-40°C to 70°C)

Nonoperating/Storage relative humidity 5% to 95%, noncondensing 5% to 95%, noncondensing

Altitude Up to 16,404 ft (5 km) Up to 16,404 ft (5 km)

Acoustic Power: 0 dB No fan Power: 0 dB No fan

Reliability

MTBF (years) 118.54 years 69.43 years

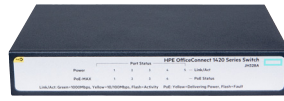
HPE OfficeConnect 1420 Switch Series (continued)

Specifications (continued)	HPE OfficeConnect 1420-24G-2SFP+ 10G Uplink Switch (JH018A)	HPE OfficeConnect 1420-24G-PoE+ (124W) Switch (JH019A)
Electrical characteristics		
Frequency	50/60 Hz	50/60 Hz
Voltage	100–240 VAC, rated	100–240 VAC, rated
Current	0.4 A	0.3 A (without PoE)/1.81 A (with full PoE power)
Maximum power rating	21 W	18 W (without PoE)/160 W (with full PoE power)
PoE power		124 W PoE+
Notes	<p>Maximum power rating is the worst-case theoretical maximum number provided for planning the infrastructure with fully loaded PoE (if equipped), 100% traffic, all ports plugged in, and all modules populated.</p> <p>This model comes with an internal power supply. Power cord provided based on region option.</p>	<p>Maximum power rating is the worst-case theoretical maximum number provided for planning the infrastructure with fully loaded PoE (if equipped), 100% traffic, all ports plugged in, and all modules populated.</p> <p>PoE power is the power budget available for Power over Ethernet. This product provides PoE or PoE+ power across 12 of 24 ports, with a total power budget of 124 W. This model comes with an internal power supply. Power cord provided based on region option.</p>
Safety	CSA 22.2 No. 60950; UL 60950-1; IEC 60950-1; EN 60950-1	CSA 22.2 No. 60950; UL 60950-1; IEC 60950-1; EN 60950-1
Emissions	FCC Rules Part 15, Subpart B Class A	FCC Rules Part 15, Subpart B Class A
Immunity		
Generic	EN 55022, CISPR 22	EN 55022, CISPR 22
EN	EN 55024, CISPR 24	EN 55024, CISPR 24
ESD	IEC 61000-4-2	IEC 61000-4-2
Radiated	IEC 61000-4-3	IEC 61000-4-3
EFT/Burst	IEC 61000-4-4	IEC 61000-4-4
Surge	IEC 61000-4-5	IEC 61000-4-5
Conducted	IEC 61000-4-6	IEC 61000-4-6
Power frequency magnetic field	IEC 61000-4-8	IEC 61000-4-8
Voltage dips and interruptions	IEC 61000-4-11	IEC 61000-4-11
Harmonics	IEC 61000-3-2	IEC 61000-3-2
Flicker	IEC 61000-3-3	IEC 61000-3-3
Notes	Use only supported genuine HPE transceivers with your switch.	
Services	Refer to the Hewlett Packard Enterprise website at hpe.com/networking/services for details on the service-level descriptions and product numbers. For details about services, and response times in your area, please contact your local Hewlett Packard Enterprise sales office.	Refer to the Hewlett Packard Enterprise website at hpe.com/networking/services for details on the service-level descriptions and product numbers. For details about services, and response times in your area, please contact your local Hewlett Packard Enterprise sales office.

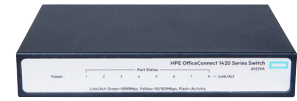
HPE OfficeConnect 1420 Switch Series (continued)



HPE OfficeConnect 1420 5G Switch (JH327A)



HPE OfficeConnect 1420 5G POE+ Switch (JH328A)



HPE OfficeConnect 1420 8G Switch (JH329A)

Specifications (continued)

I/O ports and slots

5 RJ-45 autosensing 10/100/1000 ports (IEEE 802.3 Type 10BASE-T, IEEE 802.3u Type 100BASE-TX, IEEE 802.3ab Type 1000BASE-T); Media Type: Auto-MDIX; Duplex: 10BASE-T/100BASE-TX: half or full; 1000BASE-T: full only

5 RJ-45 autosensing 10/100/1000 ports (IEEE 802.3 Type 10BASE-T, IEEE 802.3u Type 100BASE-TX, IEEE 802.3ab Type 1000BASE-T); Media Type: Auto-MDIX; Duplex: 10BASE-T/100BASE-TX: half or full; 1000BASE-T: full only

8 RJ-45 autosensing 10/100/1000 ports (IEEE 802.3 Type 10BASE-T, IEEE 802.3u Type 100BASE-TX, IEEE 802.3ab Type 1000BASE-T); Media Type: Auto-MDIX; Duplex: 10BASE-T/100BASE-TX: half or full; 1000BASE-T: full only

Supports a maximum of 8 autosensing 10/100/1000 ports

Physical characteristics

Dimensions

4.53(w) x 3.18(d) x 1.06(h) in.
(11.5 x 8.7 x 2.7 cm)

6.21(w) x 4.13(d) x 1.06(h) in.
(15.77 x 10.49 x 2.69 cm)

6.21(w) x 4.13(d) x 1.06(h) in.
(15.77 x 10.49 x 2.69 cm)

Weight

0.66 lb (0.3 kg)

1.10 lb (0.5 kg)

1.10 lb (0.5 kg)

Memory and processor

Packet buffer size: 125 KB

Packet buffer size: 125 KB

Packet buffer size: 187.5 KB

Mounting and enclosure

Desktop (rear port)

Desktop (rear port)

Desktop (rear port)

Performance

100 Mb Latency

< 3 μs (LIFO 64-byte packets)

< 3 μs (LIFO 64-byte packets)

< 3 μs (LIFO 64-byte packets)

1000 Mb Latency

< 2.6 μs (LIFO 64-byte packets)

< 2.6 μs (LIFO 64-byte packets)

< 2.6 μs (LIFO 64-byte packets)

Throughput

Up to 7.4 Mpps

Up to 7.4 Mpps

Up to 11.8 Mpps

Routing/Switching capacity

10 Gbps

10 Gbps

16 Gbps

MAC address table size

2048 entries

2048 entries

4096 entries

Environment

Operating temperature

32°F to 104°F (0°C to 40°C)

32°F to 104°F (0°C to 40°C)

32°F to 104°F (0°C to 40°C)

Operating relative humidity

15% to 95%, noncondensing

15% to 95%, noncondensing

15% to 95% @ 104°F (40°C), noncondensing

Nonoperating/Storage temperature

-40°F to 158°F (-40°C to 70°C)

-40°F to 158°F (-40°C to 70°C)

-40°F to 158°F (-40°C to 70°C)

Nonoperating/Storage relative humidity

15% to 95%, noncondensing

15% to 95%, noncondensing

15% to 95% @ 149°F (65°C), noncondensing

Acoustic

Power: 0 dB No fan

Power: 0 dB No fan

Power: 0 dB No fan

Reliability

MTBF (years)

127.70 years

75.84 years

121.45 years

Electrical characteristics

Frequency

50/60 Hz

50/60 Hz

50/60 Hz

Voltage

100–240 VAC, rated

100–240 VAC, rated

100–240 VAC, rated

12 V DC

12 V DC

54 V DC

12 V DC

Maximum power rating

3.0 W

40 W

4.5 W

PoE power

3.0 W

32 W PoE+

Notes

Maximum power rating is the worst-case theoretical maximum number provided for planning the infrastructure with fully loaded PoE (if equipped), 100% traffic, all ports plugged in, and all modules populated.

This model comes with an internal power supply. Power cord provided based on region option.

Maximum power rating is the worst-case theoretical maximum number provided for planning the infrastructure with fully loaded PoE (if equipped), 100% traffic, all ports plugged in, and all modules populated.

PoE power is the power budget available for Power over Ethernet. This product provides PoE or PoE+ power across 4 of 5 ports, with a total power budget of 32 W.

This model comes with an internal power supply. Power cord provided based on region option.

Maximum power rating is the worst-case theoretical maximum number provided for planning the infrastructure with fully loaded PoE (if equipped), 100% traffic, all ports plugged in, and all modules populated.

This model comes with an internal power supply. Power cord provided based on region option.

HPE OfficeConnect 1420 Switch Series (continued)

Specifications (continued)	HPE OfficeConnect 1420 5G Switch (JH327A)	HPE OfficeConnect 1420 5G POE+ (32W) Switch (JH328A)	HPE OfficeConnect 1420 8G Switch (JH329A)
Safety	UL 60950; IEC 60950-1; EN 60950-1; CAN/CSA-C22.2 No. 60950-1-03	UL 60950; IEC 60950-1; EN 60950-1; CAN/CSA-C22.2 No. 60950-1-03	UL 60950; IEC 60950-1; EN 60950-1; CAN/CSA-C22.2 No. 60950-1-03
Emissions	FCC Rules Part 15, Subpart B Class A	FCC Rules Part 15, Subpart B Class A	FCC Rules Part 15, Subpart B Class A
Immunity			
Generic	EN 55022, CISPR 22	EN 55022, CISPR 22	EN 55022, CISPR 22
EN	EN 55024, CISPR 24	EN 55024, CISPR 24	EN 55024, CISPR 24
ESD	IEC 61000-4-2	IEC 61000-4-2	IEC 61000-4-2
Radiated	IEC 61000-4-3	IEC 61000-4-3	IEC 61000-4-3
EFT/Burst	IEC 61000-4-4	IEC 61000-4-4	IEC 61000-4-4
Surge	IEC 61000-4-5	IEC 61000-4-5	IEC 61000-4-5
Conducted	IEC 61000-4-6	IEC 61000-4-6	IEC 61000-4-6
Power frequency magnetic field	IEC 61000-4-8	IEC 61000-4-8	IEC 61000-4-8
Voltage dips and interruptions	IEC 61000-4-11	IEC 61000-4-11	IEC 61000-4-11
Harmonics	IEC 61000-3-2	IEC 61000-3-2	IEC 61000-3-2
Flicker	IEC 61000-3-3	IEC 61000-3-3	IEC 61000-3-3
Services	Refer to the Hewlett Packard Enterprise website at hpe.com/networking/services for details on the service-level descriptions and product numbers. For details about services and response times in your area, please contact your local Hewlett Packard Enterprise sales office.	Refer to the Hewlett Packard Enterprise website at hpe.com/networking/services for details on the service-level descriptions and product numbers. For details about services and response times in your area, please contact your local Hewlett Packard Enterprise sales office.	Refer to the Hewlett Packard Enterprise website at hpe.com/networking/services for details on the service-level descriptions and product numbers. For details about services and response times in your area, please contact your local Hewlett Packard Enterprise sales office.

HPE OfficeConnect 1420 Switch Series (continued)



Specifications (continued)	HPE OfficeConnect 1420 8G PoE+ (64W) Switch (JH330A)	HPE OfficeConnect 1420 24G Switch (JG708B)
I/O ports and slots	8 RJ-45 autosensing 10/100/1000 ports (IEEE 802.3 Type 10BASE-T, IEEE 802.3u Type 100BASE-TX, IEEE 802.3ab Type 1000BASE-T); Media Type: Auto-MDIX; Duplex: 10BASE-T/100BASE-TX: half or full; 1000BASE-T: full only Supports a maximum of 8 autosensing 10/100/1000 ports	24 RJ-45 autosensing 10/100/1000 ports (IEEE 802.3 Type 10BASE-T, IEEE 802.3u Type 100BASE-TX, IEEE 802.3ab Type 1000BASE-T); Media Type: Auto-MDIX; Duplex: 10BASE-T/100BASE-TX: half or full; 1000BASE-T: full only Supports a maximum of 24 autosensing 10/100/1000 ports
Physical characteristics		
Dimensions	9.24(w) x 4.13(d) x 1.06(h) in. (23.47 x 10.49 x 2.69 cm)	17.32(w) x 6.81(d) x 1.73(h) in. (44 x 17.3 x 4.4 cm)
Weight	1.54 lb (0.7 kg)	6.61 lb (3 kg)
Memory and processor	Packet buffer size: 187.5 KB	1 MB flash; Packet buffer size: 512 KB
Mounting and enclosure	Desktop (rear port)	Mounts in an EIA standard 19-inch telco rack (hardware included); Desktop mounting
Performance		
100 Mb Latency	< 3 μs (LIFO 64-byte packets)	< 8.0 μs (LIFO 64-byte packets)
1000 Mb Latency	< 2.6 μs (LIFO 64-byte packets)	< 16 μs (LIFO 64-byte packets)
Throughput	Up to 11.8 Mpps	Up to 35.7 Mpps (64-byte packets)
Routing/Switching capacity	16 Gbps	48 Gbps
MAC address table size	4096 entries	8192 entries

HPE OfficeConnect 1420 Switch Series (continued)

Specifications (continued)	HPE OfficeConnect 1420 8G PoE+ (64W) Switch (JH330A)	HPE OfficeConnect 1420 24G Switch (JG708B)
Environment		
Operating temperature	32°F to 104°F (0°C to 40°C)	32°F to 104°F (0°C to 40°C)
Operating relative humidity	15% to 95% @ 104°F (40°C), noncondensing	5% to 95% @ 104°F (40°C), noncondensing
Nonoperating/Storage temperature	-40°F to 158°F (-40°C to 70°C)	-40°F to 158°F (-40°C to 70°C)
Nonoperating/Storage relative humidity	15% to 90% @ 149°F (65°C), noncondensing	5% to 90% @ 149°F (65°C), noncondensing
Altitude	Up to 10,000 ft (3 km)	Up to 16,404 ft (5 km)
Acoustic	Power: 0 dB No fan	Power: 0 dB No fan
Reliability		
MTBF (years)	73.57 years	140.34 years
Electrical characteristics		
Frequency	50/60 Hz	50/60 Hz
Maximum heat dissipation		55 BTU/hr (58 kJ/hr)
Voltage	100–240 VAC, rated 54 V DC	100–240 VAC, rated
Current		0.3 A
Maximum power rating	80 W	16 W
PoE power	64 W PoE+	
Notes	<p>Maximum power rating is the worst-case theoretical maximum number provided for planning the infrastructure with fully loaded PoE (if equipped), 100% traffic, all ports plugged in, and all modules populated.</p> <p>PoE power is the power budget available for Power over Ethernet. This product provides PoE or PoE+ power across 8 of 8 ports, with a total power budget of 64 W.</p> <p>This model comes with an internal power supply. Power cord provided based on region option.</p>	<p>Maximum power rating is the worst-case theoretical maximum number provided for planning the infrastructure with fully loaded PoE (if equipped), 100% traffic, all ports plugged in, and all modules populated.</p> <p>This model comes with an internal power supply. Power cord provided based on region option.</p>
Safety	UL 60950; IEC 60950-1; EN 60950-1; CAN/CSA-C22.2 No. 60950-1-03	CSA 22.2 No. 60950; UL 60950-1; IEC 60950-1; EN 60950-1
Emissions	FCC Rules Part 15, Subpart B Class A	FCC Rules Part 15, Subpart B Class A
Immunity		
Generic	EN 55022, CISPR 22	EN 55022, CISPR 22
EN	EN 55024, CISPR 24	EN 55024, CISPR 24
ESD	IEC 61000-4-2	IEC 61000-4-2
Radiated	IEC 61000-4-3	IEC 61000-4-3
EFT/Burst	IEC 61000-4-4	IEC 61000-4-4
Surge	IEC 61000-4-5	IEC 61000-4-5
Conducted	IEC 61000-4-6	IEC 61000-4-6
Power frequency magnetic field	IEC 61000-4-8	IEC 61000-4-8
Voltage dips and interruptions	IEC 61000-4-11	IEC 61000-4-11
Harmonics	IEC 61000-3-2	IEC 61000-3-2
Flicker	IEC 61000-3-3	IEC 61000-3-3
Notes		IEEE 802.3az Energy Efficient Ethernet protocol is supported by the HPE OfficeConnect 1420 24G (JG708B), HPE 1410-16 (J9662A) and HPE 1410-24 (J9663A) Switches.
Services	Refer to the Hewlett Packard Enterprise website at hpe.com/networking/services for details on the service-level descriptions and product numbers. For details about services and response times in your area, please contact your local Hewlett Packard Enterprise sales office.	Refer to the Hewlett Packard Enterprise website at hpe.com/networking/services for details on the service-level descriptions and product numbers. For details about services and response times in your area, please contact your local Hewlett Packard Enterprise sales office.

Standards and protocols

(applies to all products in series)

General protocols	IEEE 802.1p Priority IEEE 802.3ab 1000BASE-T	IEEE 802.3az Energy Efficient Ethernet IEEE 802.3i 10BASE-T Ethernet over twisted pair	IEEE 802.3u 100BASE-TX Fast Ethernet, 100BASE-FX with auto-negotiation IEEE 802.3x Flow Control
--------------------------	---	---	--

HPE OfficeConnect 1420 Switch Series accessories**Cables (for models JH017A and JH018A)**

HPE 0.5 m Multimode OM3 LC/LC Optical Cable (AJ833A)
HPE 1 m Multimode OM3 LC/LC Optical Cable (AJ834A)
HPE 2 m Multimode OM3 LC/LC Optical Cable (AJ835A)
HPE 5 m Multimode OM3 LC/LC Optical Cable (AJ836A)
HPE 15 m Multimode OM3 LC/LC Optical Cable (AJ837A)
HPE 30 m Multimode OM3 LC/LC Optical Cable (AJ838A)
HPE 50 m Multimode OM3 LC/LC Optical Cable (AJ839A)
HPE Premier Flex LC/LC Multi-mode OM4 2 fiber 1m Cable (QK732A)
HPE Premier Flex LC/LC Multi-mode OM4 2 fiber 2m Cable (QK733A)
HPE Premier Flex LC/LC Multi-mode OM4 2 fiber 5m Cable (QK734A)
HPE Premier Flex LC/LC Multi-mode OM4 2 fiber 15m Cable (QK735A)
HPE Premier Flex LC/LC Multi-mode OM4 2 fiber 30m Cable (QK736A)
HPE Premier Flex LC/LC Multi-mode OM4 2 fiber 50m Cable (QK737A)

HPE OfficeConnect 1420-24G-2SFP Switch (JH017A)

HPE X121 1G SFP LC SX Transceiver (J4858C)
HPE X121 1G SFP LC LX Transceiver (J4859C)
HPE X121 1G SFP RJ45 T Transceiver (J8177C)
HPE X120 1G SFP LC SX Transceiver (JD118B)
HPE X120 1G SFP LC LX Transceiver (JD119B)
HPE X110 100M SFP LC LX Transceiver (JD102B)
HPE X120 1G SFP RJ45 T Transceiver (JD089B)

HPE OfficeConnect 1420-24G-2SFP+ 10G Uplink Switch (JH018A)

HPE X121 1G SFP LC SX Transceiver (J4858C)
HPE X121 1G SFP LC LX Transceiver (J4859C)
HPE X121 1G SFP RJ45 T Transceiver (J8177C)
HPE X120 1G SFP LC SX Transceiver (JD118B)
HPE X120 1G SFP LC LX Transceiver (JD119B)
HPE X120 1G SFP RJ45 T Transceiver (JD089B)
HPE X132 10G SFP+ LC SR Transceiver (J9150A)
HPE X130 10G SFP+ LC SR Transceiver (JD092B)
HPE X130 10G SFP+ LC LR Transceiver (JD094B)
HPE X242 10G SFP+ to SFP+ 1m Direct Attach Copper Cable (J9281B)
HPE X242 10G SFP+ to SFP+ 3m Direct Attach Copper Cable (J9283B)

Learn more at
[hpe.com/networking](https://www.hpe.com/networking)



Sign up for updates
